



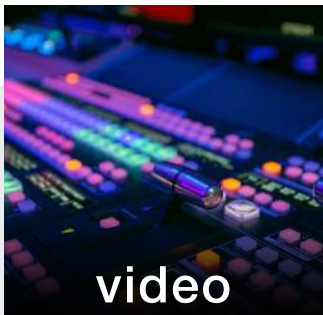
TOWN HALL
SPACES

DEFAULT TECHNICAL SERVICES
SYSTEM PACKAGES
VISION HALL | INNER SPACE | THE NETWORK

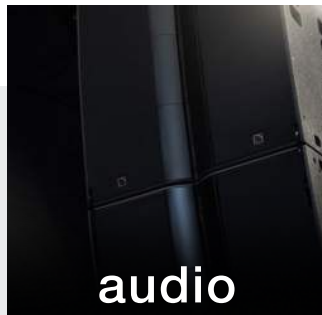




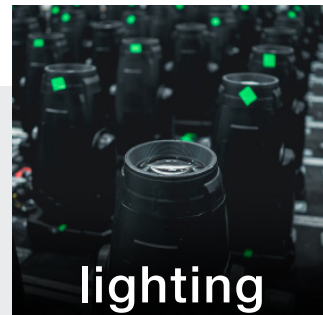
Pixl Evolution is a leading event technology company, specialising in providing exceptional production solutions for the corporate, entertainment, and special events sector. **We're proud to be the in-house technical services provider for the Town Hall Spaces.**



video



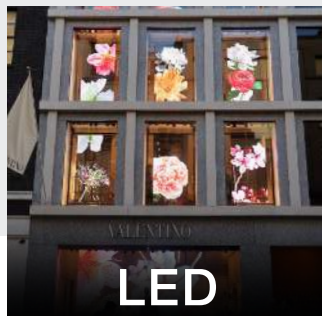
audio



lighting



scenic



LED



technical
production
management

■ why choose pixl? ■



Conveniently located onsite at Kings Cross



Extensive inventory of cutting-edge equipment to support shows of any scale



Support from the [ETP Network](#) with over 30 locations globally



PIXL BROADCAST GALLERY

Delivering broadcast-standard production for modern, hybrid events



Situated within the Inner Space, the Pixl Broadcast Gallery is a purpose-built space designed to support a wide range of live and hybrid events.

Whether you're staging a production in Vision Hall, holding a session in the Inner Space, or reaching a remote audience online, this facility brings together the tools and expertise needed to deliver an exceptional event.

Key Capabilities

Live Video Relay

Broadcast-quality camera feeds delivered directly to the main screen in Vision Hall, temporary screens in the Inner Space, or other areas throughout the venue.

Multi-Camera Recording

Capture your event from multiple angles in Vision Hall or Inner Space, creating a high-quality video asset for later use.

Live Streaming

Stream your event live to remote audiences via platforms like Zoom, Microsoft Teams, or your own dedicated stream (RTMP or SRT).

Remote Presenter Integration

Host a fully virtual broadcast, blending in-person or studio elements with remote speakers across any web platform or custom stream.

Camera Options

Remote-Controlled 'Robo' Cameras

Discreet and efficient, these are ideal for low profile setups.

Full Broadcast Camera Channels

Choose from remotely operated PTZ (Robo) cameras discreetly mounted, or full broadcast camera channels, Tripod Mounted, Jib, Polecam, Steadicam etc.



Additional technical equipment for all the above spaces can be procured from the in-house provider *Pixl Evolution*.



TOWN HALL
SPACES

DEFAULT TECHNICAL SERVICES
SYSTEM PACKAGES
VISION HALL





TOWN HALL
SPACES

VISION HALL

TECHNICAL SERVICES SYSTEM PACKAGE

Video	Quantity
7.5m x 4.0m (2,880px x 1536px) Unilumin UPAD IV 2.6mm LED wall	1
Novastar Processing Package	1
Barco E2 Presentation Switcher for source switching	1
Apple Mac Mini (Keynote/PowerPoint) (main & backup)	2
43" Comfort monitor at front of stage	1
Wireless presentation clicker	1
The above will allow clients to display PowerPoint/Keynote from the computers provided or their own laptop onto the LED screen, the screen is flown at the back of the stage. There is a E2 presentation switcher provided which allows for synchronised switching of sources. A clicker for cueing slides is also included.	

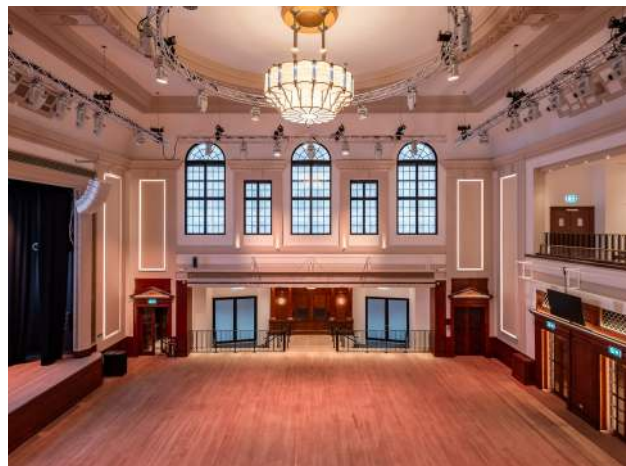
Audio	Quantity
Shure ADX1m Lapel Radio Microphone	1
Shure ADX2 Handheld Radio Microphone	1
PC audio interface	2
Yamaha DM7-EX audio mixing desk	1
Yamaha DME7 system processor	1
d&b XSLi speaker arrays (L&R of stage)	2
d&b KSL-GSUB sub-bass loudspeaker	2
d&b Yi7 delay speakers (side & rear balcony's)	3
Sennheiser MobileConnect assistive listening system	1
Comms with headsets for crew	3
The above allows for sound reinforcement covering the whole of the Vision Hall. Audio from the default laptop is routed into the mixing desk. Two radio mics are provided for speech. One lapel and one handheld. There are 3 sets of headsets for crew communications.	

Connectivity	Quantity
Various wall mounted patch panels	1

Lighting	Quantity
grandMA3 Light Lighting Desk	1
grandMA3 on PC (backup for lighting desk)	1
ACME Geist BSWF Profile Moving Head Lights	9
ACME Neozone Wash Moving Head Lights	9
The above allows for the stage and presenter to be lit to support a standard event, further upgrade packages are available. There is also a full architectural lighting package (installed by the venue) that can light the room, this can be adjusted to suit an event.	

Rigging	Quantity
Circular truss	1
Straight trusses over the floor	4
Straight trusses over the stage (1 for the LED wall)	3
Balcony bars on sides and rear of hall	3

Technical support	Quantity
Technicians to operate the equipment. They will be on an 8-hour call. Overtime beyond 8-hours will be charged at additional cost.	2



Additional technical equipment for all the above spaces can be procured from the in-house provider *Pixl Evolution*.



VISION HALL UPGRADE PACKAGES

LIGHTING

TIER 1

Base Package + Tier 1 Package

ACME Geist BSWF Profile Moving Head Lights	8
ACME Neozone Wash Moving Head Lights	8
Additional technician to operate the lighting equipment	1
Technician(s) will be on an 8-hour call. Overtime beyond 8-hours will be charged at additional cost.	

TIER 2

Base Package + Tier 1 Package + Tier 2 Package

ACME Geist BSWF Profile Moving Head Lights	8
ACME Neozone Wash Moving Head Lights	8
MDG ATMe Haze Generator	1

Additional technical equipment for all the above spaces can be procured from the in-house provider *Pixl Evolution*.



VISION HALL UPGRADE PACKAGES

PIXL BROADCAST GALLERY

Only applicable to the Vision Hall Event Space

Remote Camera Relay Package	Quantity
Panasonic Robo cameras (mounted in Vision Hall)	2
Atem 4/ME Constellation Vision Mixer	1
Blackmagic Hyperdeck Studio Pxro 4k recorder	1
Feed to Vision Hall LED wall	1
Additional technician to operate the camera equipment	2
Technician(s) will be on an 8-hour call. Overtime beyond 8-hours will be charged at additional cost.	

Broadcast Camera Relay Package	Quantity
Panasonic 4K Studio Camera Channel	2
Atem 4/ME Constellation Vision Mixer	1
Blackmagic Hyperdeck Studio Pro 4k recorder	1
Feed to Vision Hall LED Wall 1	1
Additional technician to operate the camera equipment	4
Technician(s) will be on an 8-hour call. Overtime beyond 8-hours will be charged at additional cost.	

Streaming Package	Quantity
AJA Bridge Live RTMP/SRT Streaming Encoder	1
Additional technician to operate the streaming equipment	1
They will be on an 8-hour call. Overtime beyond 8-hours will be charged at additional cost.	

Further Remote/Hybrid options available on request

Additional technical equipment for all the above spaces can be procured from the in-house provider *Pixl Evolution*.



TOWN HALL
SPACES

DEFAULT TECHNICAL SERVICES
SYSTEM PACKAGES
INNER SPACE





TOWN HALL
SPACES

INNER SPACE

TECHNICAL SERVICES SYSTEM PACKAGE

Audio	Quantity
Bose ceiling mounted speakers	54
Paging mic for announcements	1
The hall is covered by a PA system mounted in the ceiling. This is zoned so that specific areas can be used for audio reinforcement of the entire area. Background music can be played and/or announcements made from inside the Inner Space or from the Vision Hall.	

Lighting
Architectural lighting has been installed by the venue which can be adjusted to match the corporate branding and mood of events.
<i>Additional package of uplighters can be added upon request</i>

Connectivity
There are wall mounted panels which provide connectivity for video displays, audio and other additional equipment.

Technical Support	Quantity
Technician to operate the equipment. They will be on an 8-hour call. Overtime beyond 8-hours will be charged at additional cost.	1



Additional technical equipment for all the above spaces can be procured from the in-house provider *Pixl Evolution*.



TOWN HALL
SPACES

DEFAULT TECHNICAL SERVICES
SYSTEM PACKAGES
THE NETWORK





THE NETWORK

TECHNICAL SERVICES SYSTEM PACKAGE

Video	Quantity
3.6m x 2m (1,920px x 1080px) X-Poster Pro 1.8mm LED Wall	2
Barco PDS-4K Presentation Switcher for source switching	1
Apple Mac Mini (Keynote/PowerPoint) (main & backup)	1
Wireless presentation clicker	1
<p>This space has been designed to be plug and play. Two floor mounted LED screens are permanently installed in the main space – one of the screens comes included and you can use the additional screen for an upgrade cost. The above will allow clients to display PowerPoint/Keynote from the computers provided or their own laptop. If customers require web calls and/or streaming, this service can be facilitated. A clicker of cueing slides is also included.</p>	

Audio	Quantity
Shure ceiling mounted array microphones	2
Yamaha DM3 audio mixing desk	1
L-Acoustics X6i loudspeaker	9
L-Acoustics SB10i sub-bass loudspeaker	2
Audio playback for background & laptop audio	1
<p>The above allows for sound reinforcement covering the whole of The Network. Audio from the default laptop is routed into the mixing desk. Two ceiling mounted array microphones are provided for speech.</p>	

Lighting
<p>Architectural lighting has been installed by the venue which can be adjusted to match the corporate branding and mood of events.</p>

Connectivity	Quantity
<p>There are wall mounted panels which provide connectivity for video displays, audio and other additional equipment.</p>	4

Technical Support	Quantity
<p>Technician to operate the equipment. They will be on an 8-hour call. Overtime beyond 8-hours will be charged at additional cost.</p>	1

Additional Options	Quantity
Camera for streaming	1
3.6m x 2m (1,920px x 1080px) X Pro Poster Pro 1.8mm LED Wall	1

Additional technical equipment for all the above spaces can be procured from the in-house provider *Pixl Evolution*.